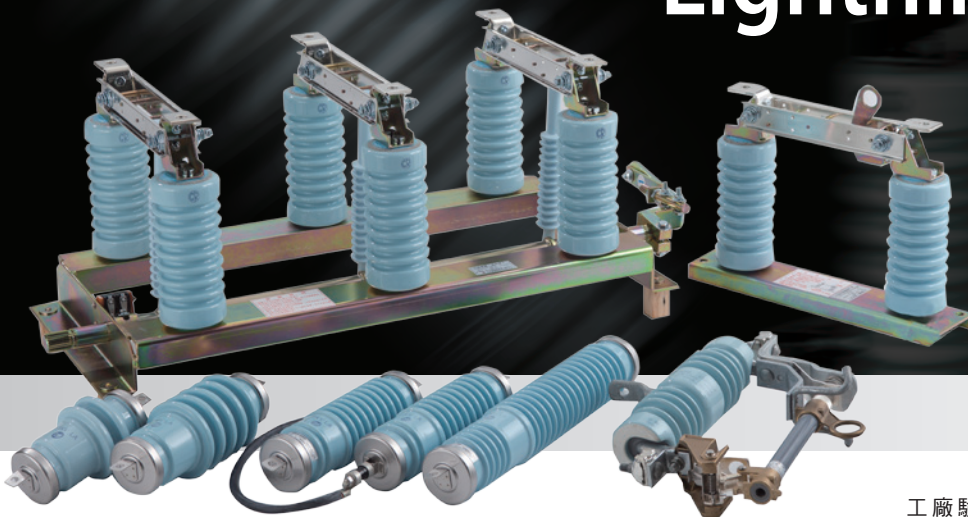




2014.01 版

分段開關 / 避雷器 / 熔絲鏈開關

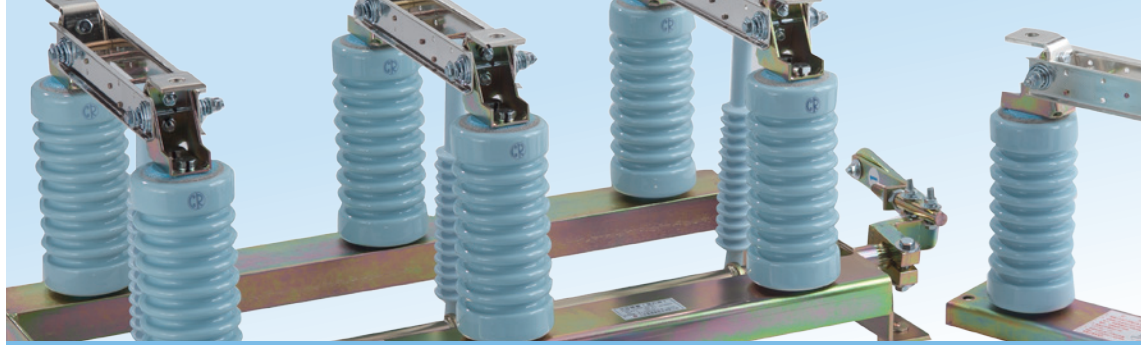
Disconnecting Switches/ Lightning Arresters/ Fuse Cutout



工廠驗證



INTEGRATION OF POWER SYSTEM



Contents

一、分段開關 Disconnecting Switches

- (1) 特性 Characteristics 1
- (2) 規格 Specification 1

二、避雷器 Lightning Arresters

- (1) 碳化矽避雷器 Sic Lightning Arrester 3
 - A. 特性 Characteristics 3
 - B. 外形尺寸 Outline Dimensions 3
 - C. 附件-壓束板與安裝架組 Accessories-Install Device 3
 - D. 士林LV型避雷器記號說明 LV Lightning Arrester Type Code 3
- (2) 氧化鋅避雷器 Zno Lightning Arrester 4
 - A. 前言 Introduction 4
 - B. 優點 Advantages 4
 - C. 構造 Construction 4
 - D. 特性 Characteristics 5
 - E. 外形尺寸 Outline Dimensions 6
 - F. 附件-壓束板與安裝架組 Accessories-Install Device 6
 - G. 避雷器選擇 Selection 6



三、熔絲鏈開關 Fuse Cutout

- (1) 特性 Characteristics 7
- (2) 規格 Specification 7
- (3) 保養 Maintenance 7

一、分段開關 Disconnecting Switches

(1) 特性 Characteristics

- 本分段開關適合於周圍溫度40°C以下使用。
- 在線路無負載的情況下才可以啟開操作。
- 啟閉時安全操作棒應沿開關安裝方向垂直操作。
- This disconnecting switch is suitable for operation at an ambient temperature 40°C or less.
- Switch on operation only when there is no load on current.
- To switch off, operate the switch stick in a vertical direction.

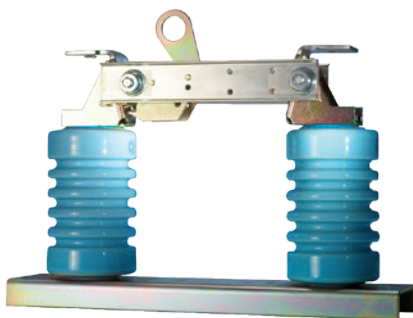
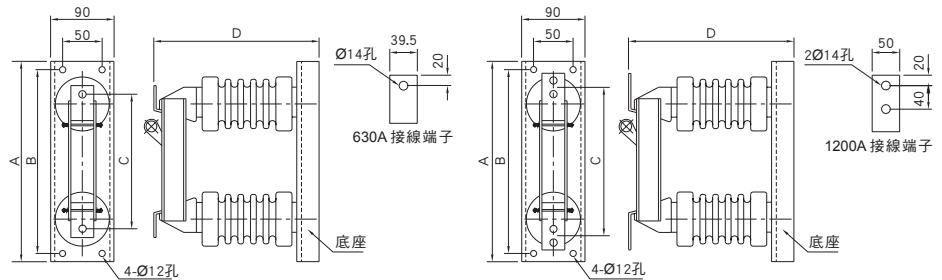
(2) 規格 Specification

場所 Place	型式 Type	額定電壓 Rated Voltage (kV)	額定電流 Rated Current (A)	1秒電流 1sec Current Rating (kA)	絕緣強度·耐壓值(kV) Insulation Withstand Test Voltage (kV)		
					衝擊波(標準波型)B.I.L Impulse 1.2x50 μs (Crest)	商用週波Power-Frequency	
					乾燥(1分鐘) Dry (1 min)	注水(10秒鐘) Wet (10 sec)	
屋內 (Indoor)	SDS-HE6N SDS-HE6B	15	630	25	95	35	—
	SDS-HE12N SDS-HE12B		1200	40			—
	SDS-HF6N SDS-HF6B	25	630	25	125	60	—
	SDS-HF12N SDS-HF12B		1200	40			—
	SDS-3HE6N SDS-3HE6B	15	630	25	95	35	—
	SDS-3HE12N SDS-3HE12B		1200	40			—
	SDS-3HF6N SDS-3HF6B	25	630	25	125	60	—
	SDS-3HF12N SDS-3HF12B		1200	40			—
屋外 (Outdoor)	SDS-DE6	15	630	25	110	50	45

註： 1. N為代表瓷礙子型，B為代表樹脂礙子型
2. 附電氣連鎖型於型式後方加(E)

Note： 1. N is porcelain insulator type, B is epoxy insulator type.
2. The type back add to (E) for with electric interlock.

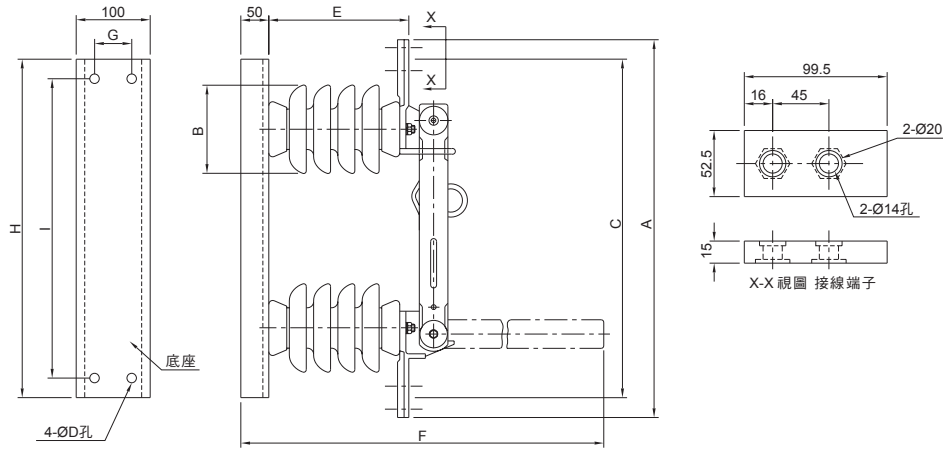
單相 屋內用 Indoor Use



單位Unit：mm

型式規格 Specification	變化尺寸 Dimension				重量 Weight(kg)	備註Note
	A	B	C	D		
SDS-HE6N 15kV 630A	400	370	260	262	7.8	
SDS-HE12N 15kV 1200A	400	370	290	264	9.2	瓷礙子型Porcelain Insulator Type
SDS-HF6N 25kV 630A	450	422	310	316	9.7	
SDS-HF12N 25kV 1200A	450	422	340	318	11.2	
SDS-HE6B 15kV 630A	400	370	260	248	5	樹脂礙子型Epoxy Insulator Type
SDS-HE12B 15kV 1200A	400	370	290	250	6.5	
SDS-HF6B 25kV 630A	450	422	310	316	7	
SDS-HF12B 25kV 1200A	450	422	340	318	8.5	

屋外用 Outdoor Use



單位Unit : mm

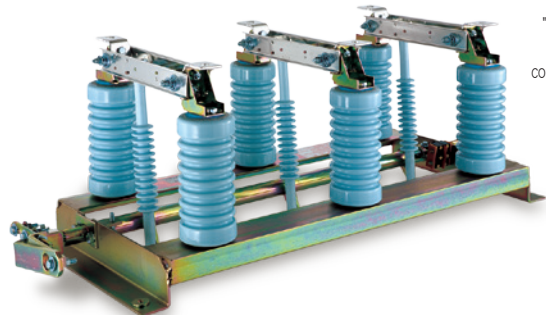
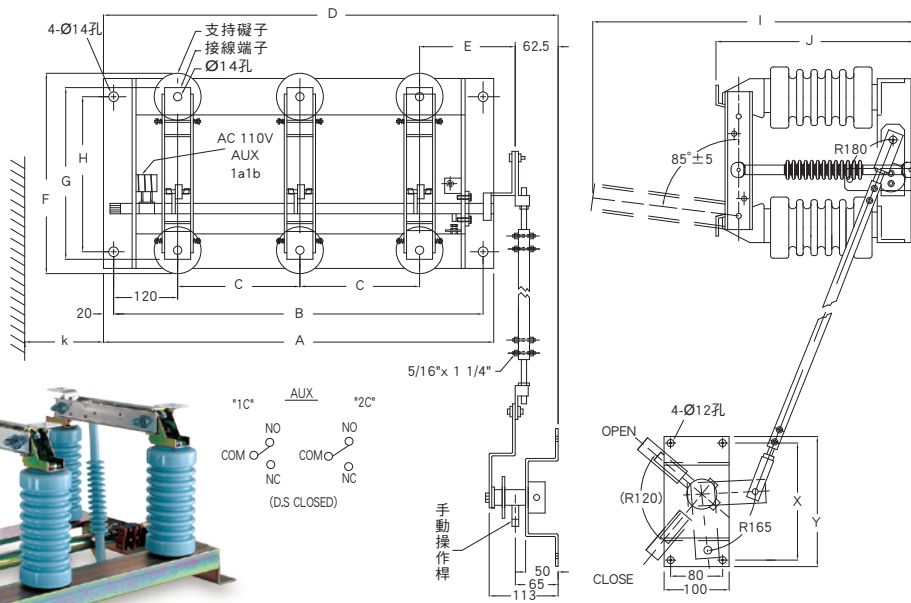
型式規格 Specification	變化尺寸 Dimension										重量Weight(kg)
	A	B	C	D	E	F	G	H	I		
SDS-DE6 15kV, 630A	580	142	510	14	190	590	50	610	540	15	

三相
屋內用 Indoor Use

單位Unit : mm

型式規格 Specification	變化尺寸 Dimension												重量Weight(kg)	備註Note
	A	B	C	D	E	F	G	H	I	J	K			
SDS-3HE6N 15kV 630A													35	瓷磚子型Porcelain Insulator Type
SDS-3HE12N 15kV 1200A	720	680	220	818	175	335	300	248	485	310	30	36		
SDS-3HF6N 25kV 630A	880	840	300	1043	240	387	352	300	605	364	130	37		
SDS-3HE6B 15kV 630A													27	樹脂磚子型Epoxy Insulator Type
SDS-3HE12B 15kV 1200A	720	680	220	818	175	335	300	248	471	296	30	28		
SDS-3HF6B 25kV 630A	880	840	300	1043	240	387	352	300	591	364	130	29		
SDS-3HF12B 25kV 1200A	880	840	300	1043	240	387	352	300	591	364	130	30		

	X	Y
附電氣連鎖 With Electric Interlock	232	252
無電氣連鎖 Non Electric Interlock	180	200



15/25kV, 630/1200A

二、避雷器 Lightning Arresters

(1) 碳化矽避雷器 Sic Lightning Arrester



A. 特性

- 本公司所生產避雷器特性，如表一所示，符合中國國家標準CNS 1246，及美國電子及電機工程師學會IEEE C62.1。
- 責務電流容量為5kA

A. Characteristics

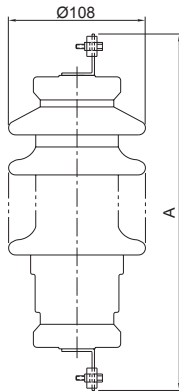
- Characteristics of our lightning arresters, as shown in Table 1, are consistent with CNS 1246 and IEEE C62.1 specifications.
- Duty current 5kA.

表一 (Table 1.)

額定電壓 Rated Voltage (kV)	絕緣耐壓 Insulation Withstand Test Voltage(kV)			商用週波放電電壓 Minimum Power-Frequency Discharge-Voltage (kV)	定峻度波頭放電電壓 Maximum Front-of-Wave Impulse Sparkover Voltage (kV) (Crest)	放電阻抗電壓 Maximum Discharge- Voltage (kV) 波形(Crest)8x20 μs			放電電流耐量 Withstand Discharge Current 4~6x10~15 μs (kA) (Crest)
	全波(波峰值) Impulse(Crest) 1.2x50 μs	60週波商用電壓 Power Frequency (r.m.s)				5kA	10kA	20kA	
		乾燥(1分鐘) Dry(1Min)	注水(10秒鐘) Wet(10 Sec)						
4.5	60	21	20	6.75以上	32	22	26	30	65
9	75	27	24	13.5以上	55	39	43	48	65
12	85	31	27	18以上	73	46	52	60	65
18	125	42	36	27以上	91	66	76	90	65

B. 外形尺寸

Outline Dimension

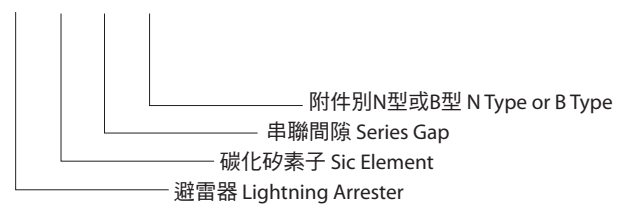


電壓kV	4.5	9	12	18
尺寸A	235	300	350	440

D. 士林LV型避雷器記號說明

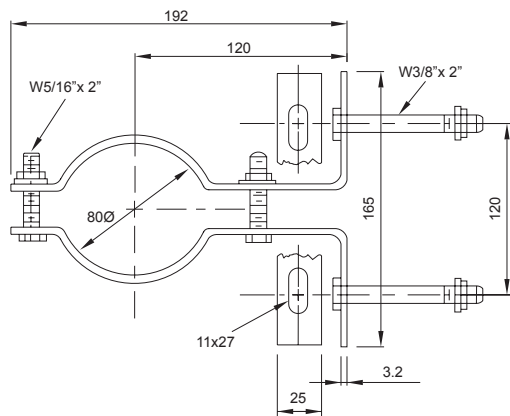
LV Lightning Arrester Type Code

L V _ G

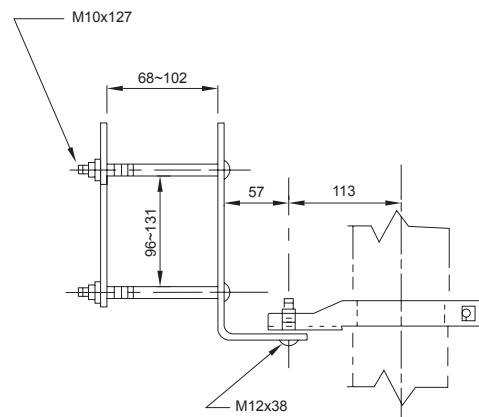


C. 附件 - 壓束板與安裝架組

Accessories-Install Device



N型(盤內用)
N Type



B型(橫擴用)
B Type

(2) 氧化鋅避雷器 ZnO Lightning Arrester

A. 前言 Introduction

本公司生產之配電用無間隙氧化鋅型避雷器，責務電流容量5kA及10kA係與美國奇異公司技術合作生產，美國自1976年開始使用於電力系統，證明對於配電線路突波電流之保護非常理想。

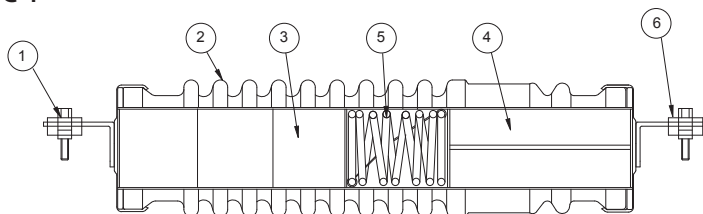
The gapless ZnO-type lightning arrester which duty current 5kA and 10kA used in distribution is a result of our Company's R&D Team in technical cooperation with General Electric in the United States. As a matter of fact, this item has been long used in the electric system in the United States ever since 1976 and has proven perfect in protecting the distribution circuit from surge current.

B. 優點 Advantages

- 提供優良的衝擊電壓保護特性。
- 提供穩定之氧化鋅素子、無續流、無間隙、對雷擊迅速反應。
- 具有完全防潮設施，全數做氣密檢驗，耐污染性高。
- 全數做洩漏電流檢驗，具有高安全性。
- 提供廣範圍之50/60Hz過電壓保護能力。
- 勿須檢查及保養，適合長時間使用。
- 隔離器裝置提供(10kA型)，當避雷器遇到超過額定之長時間連續突波時之保護功能，能使避雷器本體與配電線路隔離。
- Excellent in withstanding surge voltage.
- Stable ZnO element; non-continuous current; gapless; and instant response to lightning shock.
- Damp proof; air-tight test guaranteed and highly resisting pollution.
- Leakage test guaranteed and absolutely safe.
- Guaranteed safety in the range of 50/60Hz.
- Free check and maintenance after long-period use.
- Disconnecter is provided (10kA), which separates the lightning arrester body and the distribution circuit whenever the item meets the exceeding shock of continuous overrated surge current.

C. 構造 Construction

C-1

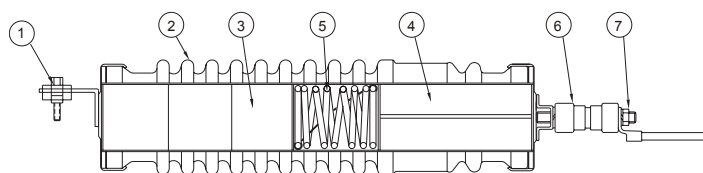


- | | |
|----------------|--------------------------|
| (1) 電源側接線端子 | (1) Line Terminal. |
| (2) 瓷器桿管 | (2) Porcelain Insulator. |
| (3) 氧化鋅(ZnO)素子 | (3) ZnO Element. |
| (4) 間隙管 | (4) Gap Tube. |
| (5) 彈簧 | (5) Spring. |
| (6) 接地側接線端子 | (6) Earthing Terminal. |

圖1 ZnO避雷器構造圖(5kA)

Fig.1 Structure of the ZnO lightning arrester(5kA)

C-2



- | | |
|----------------|--------------------------|
| (1) 電源側接線端子 | (1) Line Terminal. |
| (2) 瓷器桿管 | (2) Porcelain Insulator. |
| (3) 氧化鋅(ZnO)素子 | (3) ZnO Element. |
| (4) 間隙管 | (4) Gap Tube. |
| (5) 彈簧 | (5) Spring. |
| (6) 隔離器 | (6) Disconnecter. |
| (7) 接地側接線端子 | (7) Earthing Terminal. |

圖2 ZnO避雷器構造圖(10kA)

Fig.2 Structure of the ZnO lightning arrester (10kA)

D. 特性 Characteristics

D-1

本產品(5kA)之設計及試驗符合美國電子及電機工程師學會IEEE Std C62.11及國際電工標準IEC 60099-4之標準。責務電流容量5kA避雷器保護特性、絕緣特性如表一

The design and functions of this invention meet the standards of IEEE Std C62.11 & IEC 60099-4.

The features of protection and insulation for duty current 5kA arrester are indicated in Table 1:

表一 (Table 1.) (5kA)

額定 電壓 Rated Voltage (kV) RMS	最大連續 運轉電壓 Maximum Continuous Operating Voltage(kV)	最大等效定峻度波 頭保護水準 Max Front of Wave Protective Level 0.5µs (kV Crest)	最大放電阻抗電壓(kV波峰值) 電流波形8x20 µs Max Discharge Voltage (kV Crest) Using an 8x20 µs Current Wave			放電電流耐量 Withstand Discharge Current 4~6x10~15 µs (kA 波峰值) (kA Crest)	衝擊電壓 1.2x50 µs 全波 Impulse Voltage 1.2x50 µs Full Wave (kV 波峰值) (kV Crest)	60Hz電壓 Power-Frequency Voltage (kV RMS)	
			2.5kA	5kA	10kA			乾燥 (1分鐘) Dry(1Min)	注水 (10秒鐘) Wet(10Sec)
			4.5	3.82	24			18.6	19.8
9	7.65	36	27.9	29.7	32.4	65	75	27	24
12	10.20	48	37.2	39.6	43.2	65	85	31	27
15	12.75	60	46.5	49.5	54.0	65	95	35	30
18	15.30	72	55.8	59.4	64.8	65	125	42	36
27	22.00	108	83.7	89.1	97.2	65	150	70	60

D-2

本產品(10kA)之設計及試驗符合美國電子及電機工程師學會IEEE Std C62.11之標準。責務電流容量10kA避雷器保護特性、絕緣特性如表二

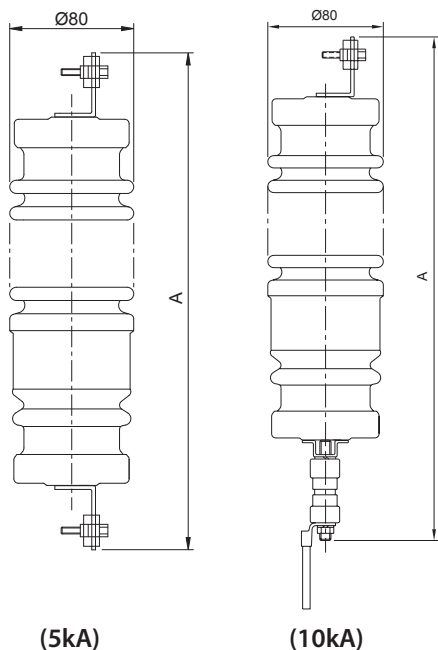
The design and functions of this invention meet the standards of IEEE Std C62.11

The features of protection and insulation for duty current 10kA arrester are indicated in Table 2:

表二 (Table 2.) (10kA)

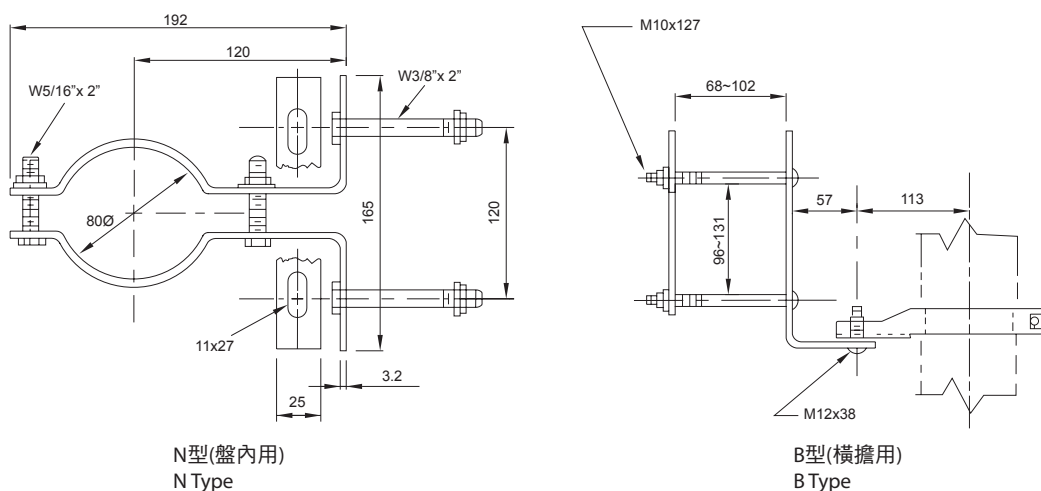
額定 電壓 Rated Voltage (kV) RMS	最大連續 運轉電壓 Maximum Continuous Operating Voltage(kV)	最大等效定峻度波 頭保護水準 Max Front of Wave Protective Level 0.5µs (kV Crest)	最大放電阻抗電壓(kV波峰值) 電流波形8x20 µs Max Discharge Voltage (kV Crest) Using an 8x20 µs Current Wave			放電電流耐量 Withstand Discharge Current 4~6x10~15 µs (kA 波峰值) (kA Crest)	衝擊電壓 1.2x50 µs 全波 Impulse Voltage 1.2x50 µs Full Wave (kV 波峰值) (kV Crest)	60Hz電壓 Power-Frequency Voltage (kV RMS)	
			5kA	10kA	20kA			乾燥 (1分鐘) Dry(1Min)	注水 (10秒鐘) Wet(10Sec)
			4.5	3.82	25			20.5	22.5
9	7.65	40	30	35	40	100	75	27	24
12	10.20	46	37.4	41	46.7	100	85	31	27
15	12.75	56	45.6	50	57	100	95	35	30
18	15.30	67	54.7	60	68.5	100	125	42	36
27	22.00	100.8	82.1	90	102.5	100	150	70	60

E. 外形尺寸 Outline Dimension



電壓 Voltages (kV)	變化尺寸 Operating Size(A)	
	5kA	10kA
4.5	288	325
9	318	355
12	398	435
15	398	435
18	485	522
27	608	645

F. 附件 - 壓束板與安裝架組 Accessories-Install Device



G. 避雷器選擇 Selection

(1) 士林氧化鋅型避雷器記號說明:

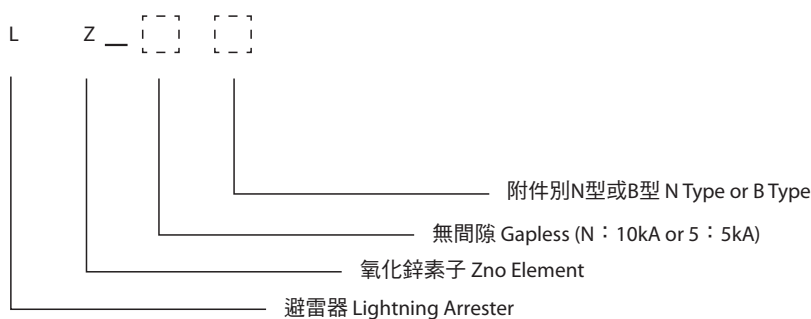
(2) 額定電壓選擇：

系統線對地電壓不得超過表一或表二之最大連續運轉電壓值

(1) Shihlin Zno-type Lightning Arrester Type Code:

(2) Selection of rated voltages:

The max. system line-to-earth voltage should not exceed the max. continuous operating voltage value listed in Table 1. or Table 2.



三、熔絲鏈開關 Fuse Cutout

(1) 特性 Characteristics

- 符合ANSI規格。
Consistent with ANSI specifications
- 採用單純之肘節機構(toggle mechanism)，熔絲熔斷之後，熔絲鏈套管迅速確實地跳開。
Employing simplified toggle mechanism. After fuse burnt, the Fuse Holder rapidly and positively disengages.
- 可動及固定導電部分均有鍍銀，保證長期使用之優良接觸與操作便利性，其餘鐵製部分亦電鍍熔鋅，耐鹽蝕能力高，在鹽分濕氣特多地方，亦能保證長期使用。
Movable and stationary contacts are coated with a thick layer of silver to ensure smooth operation for long years. Other iron parts are also coated with zinc to obtain high resistance to salt corrosion. Extensive service life is guaranteed even in salty and humid climate.
- 熔絲筒之強度很高，在沒有保養之情況下，即使以額定啟斷電流啟斷五次，亦無異狀。
High strength of Fuse Holder which will not become defective even without maintenance and subjected to five switching interrupt operations of Rated Interrupting Current.
- 附有ANSI規格之安裝器具可依照設計裝在橫木柱上。
With a Mounting Bracket of ANSI specifications that can be mounted on a crossarm according to design.

(2) 規格 Specification

表1. DXM型熔絲鏈開關種類及額定值
Table1. Type DXM cutout, Item and Rated

型別Type	DXM-5
連續額定電流Rated Continuous Current (A)	100
最大設計電壓Rated Maximum Voltage (V)	7800/15000
頻率Power Frequency (Hz)	50/60
額定啟斷電流Rated Interrupting Current (A) (Asym)	10000 (at7.8kV)

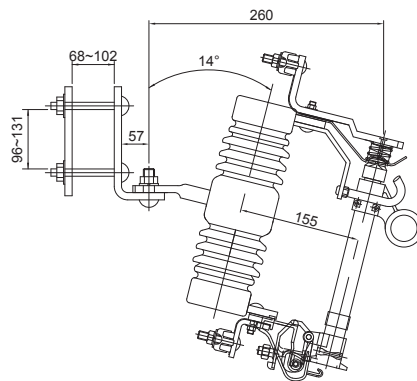
表2. DXM型熔絲鏈開關絕緣耐力表
Table2. Type DXM Cutout, Withstand Voltage

型別 Type	加壓端 Test Location	60Hz 商用電壓kV (r.m.s.) Power -Frequency Voltage (r.m.s.)		衝擊波電壓kV (crest) Impulse Voltage 1.2×50μs
		乾燥 (1分鐘) Dry (1min)	注水 (10秒) Wet (10sec)	
DXM-5	端子-端子 Terminal- Terminal	35	-	95
	端子-大地 Terminal- Ground	35	30	95

(3) 保養 Maintenance

DXM型熔絲鏈開關構造堅固，不必保養亦可長期使用，尤其是沒有保養下可以啟斷額定啟斷電流5次而不發生電氣上及機械上之障礙，但是啟斷故障多次之後，會消耗熔絲筒內部之消弧用纖維板，其內徑在下端口比原內徑大0.8~1.6mm時應更新熔絲筒。

Solid and sturdy construction of DXM CUTOUT with an extensive service life even without maintenance. It will not cause electrical or mechanical failure even without maintenance and subjected to five switching interrupt operations of Rated Interrupting current. But, after frequent interrupting failures, it will result in consumption of the Vulcanized Fibre Tube in the Fuse Holder. Replace with a new Fuse Holder in case the inner diameter at the lower end is 0.8-1.6mm larger than its original inner diameter.



士林電機認證的榮耀



通過TAF (全國認證基金會)

ISO 17025測試實驗室認證
成為全國各廠家試驗項目
最完備之重電產品測試實驗室

原製造廠家認證

全台第一家上市公司
通過經濟部能源局/高壓用電設備
原製造廠家認證



電力變壓器
POWER TRANSFORMER

重電系列產品

Integration of Power System

電力高效能 · 用電更節能



模鑄式變壓器 (節能環保高效率)
CAST RESIN TRANSFORMER



氣體絕緣開關
SF6 GAS INSULATED SWITCHGEAR EQUIPMENT



油浸式配電變壓器 (省能源環保型)
OIL IMMERSSED TRANSFORMER



智能型電表/電子式電度表
SMART METER / ELECTRICITY METER



電容器
HIGH/LOW VOLTAGE POWER CAPACITORS



比壓器/比流器
VOLTAGE TRANSFORMER /
CURRENT TRANSFORMER



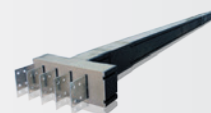
配電盤
SWITCHGEAR &
CONTROLGEAR



高壓變頻器
HV INVERTER (TIMEIC)



隔相式匯流排 (RITZ)
SOLID INSULATION SYSTEM
(RITZ)



高/低壓匯流排
HV/ LV BUSWAY



RITZ/MWB變比器
VOLTAGE TRANSFORMER /
CURRENT TRANSFORMER (RITZ)

INTEGRATION OF POWER SYSTEM

重電事業群

電力變壓器、模鑄式變壓器、油浸式配電變壓器、配電盤、分段開關/避雷器、高低壓進相電容器、智慧型低壓電容器盤、
比流器/比壓器、智能型數位集合式電表、智能型三相多功能電子式電度表、智能型預付費單相電子式電度表

www.seec.com.tw

總公司
HEAD OFFICE

111 臺北市中山北路六段88號16樓
16 F, No.88, Sec. 6, ChungShan N. Rd., Taipei, Taiwan

TEL. 02-2834-2662
FAX. 02-2836-6187

重電廠
Heavy Electric System

303 新竹縣新竹工業區中華路23號
No.23, ChungHwa Rd., Huko Hsiang, HsinChu, Taiwan.303

TEL. 03- 598-1921
FAX. 03- 598-1480

機電外銷部
Heavy Electric Export
Sales Dept.

111 台北市中山北路六段88號13樓
13F, No.88, Sec.6, ChungShan N. Rd., Taiwan. 111

TEL. +886-2-2832-1556
FAX. +886-2-2832-1003

配電盤事業
Panelboard System Div.

303 新竹縣新竹工業區中華路23號
No.23, ChungHwa Rd.,Huko Hsiang, HsinChu, Taiwan.303

TEL. 03-598-1921 ext.236
FAX. 03-597-3774

台北分公司
Taipei Branch

104 台北市長安東路一段9號3F
3F, No.9, Sec. 1, ChangAn E. Rd., Taipei Taiwan.104

TEL. 02-2541-9822
FAX. 02-2581-2665

新竹分公司
Hsinchu Branch

303 新竹縣湖口鄉鳳凰村中華路23號
No. 23, ChungHwa Rd., Huko Hsiang, Hsinchu, Taiwan. 303

TEL. 03-598-1210
FAX. 03-598-5200

台中分公司
Taichung Branch

407 台中市台中港路三段134之3號
No. 134-3, Sec. 3, TaiChungKang Rd., Taichung, Taiwan. 407

TEL. 04-2461-0466
FAX. 04-2461-0468

台南分公司
Tainan Branch

701 台南市中華東路一段198號
No. 198, Sec. 1, ChungHwa E. Rd., Tainan, Taiwan. 701

TEL. 06-237-1246
FAX. 06-237-1279

高雄分公司
Kaohsiung Branch

807 高雄市三民區中華二路250號
No. 205, ChungHwa 2 Rd., Kaohsiung, Taiwan. 807

TEL. 07-316-0228
FAX. 07-316-0226

經銷商

2013.11