

MiCOM P12x/y

Three phase and earth fault overcurrent relays



The MiCOM P1 2x/y relays provides features for easy adaptation and are suitable for all applications where overcurrent and earth-fault protection are required.

The MiCOM P1 2x non-directional relays ranges from the single phase/earth fault P1 20 up to the multifunction three phase and earth fault P1 23.

The MiCOM P1 2y directional relays ranges from the single phase/earth fault P1 25 up to the multifunction three phase and earth fault P1 27, complete of voltage and frequency protection functions.

Users particularly appreciate the friendliness of the Human Machine Interface and the easy setting of the relays (that can be fully set through the front HMI or using MiCOM S1 setting software).

In addition to its protection function, MiCOM P1 2x/y provides full measurement and monitoring information necessary for efficient maintenance and post-fault analysis.

Several communication protocols allow easy interfacing of the MiCOM P1 2x/y relays in most of substation control or SCADA systems.

With latest upgrade, MiCOM P1 27 now can provide the optional Ethernet communication with 2 RJ45 interfaces.

The MiCOM P1 2x/y range is housed in the same draw out 4U metal case for panel or rack mounting with 20TE width (P1 20, P1 21, P1 22, P1 23 and P1 25) or 30TE width (P1 26 and P1 27).

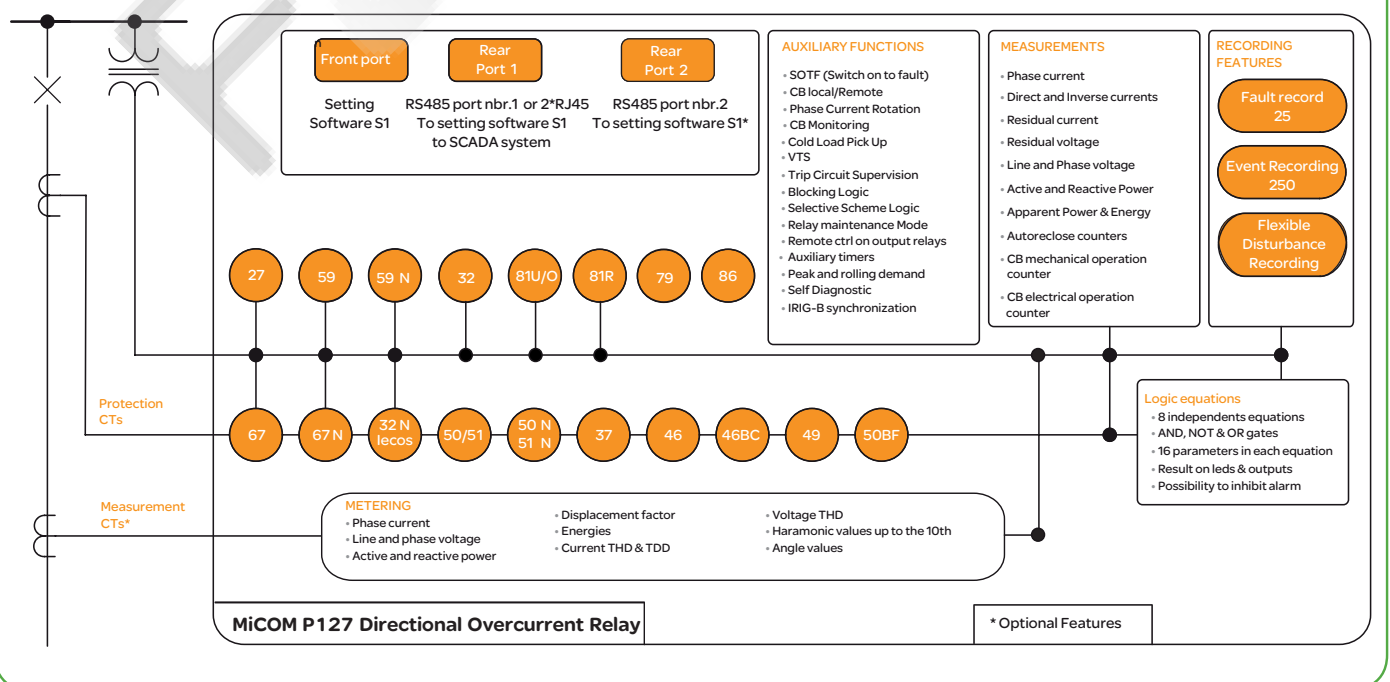


CUSTOMER BENEFITS

- Integration of function leading to cost-effective solution
- User friendly Human Machine Interface
- Highly flexible overcurrent relay with logic equations
- Multi-shot Autoreclose
- One single configuration software MiCOM S1 Studio
- Full set of measurement, metering & recording
- Cost effective Ethernet communication

ANSI codes features		P120	P121	P122	P123	P125	P126	P127
50/51P/N	1 phase or earth overcurrent	■				■		
50/51	3 phase overcurrent		■	■	■		■	■
50/51N	Earth overcurrent		■	■	■		■	■
67P	3 phase directional overcurrent							■
67N	Earth fault directional overcurrent					■	■	■
51V	Voltage controlled overcurrent							■
37	3 phase undercurrent			■	■		■	■
46	Negative phase sequence overcurrent			■	■		■	■
27/59	Phase under/over voltage (AND & OR mode)							■
47	Negative Phase sequence voltage							■
59N	Residual over voltage					■	■	■
32	Directional Power protection (Under/Over active/reactive power)							■
32N	Wattmetric Earth Fault					■	■	■
81U/O	Under/over frequency							■
81R	Rate of Frequency							■
49	Thermal overload			■	■		■	■
86	Output relay latching	■	■	■	■	■	■	■
79	Autoreclose				■		■	■
50BF	Circuit breaker failure detection			■	■		■	■
46BC	Broken conductor detection I2/I1			■	■		■	■
	Test of output relays (Maintenance)			■	■	■	■	■
	CB control Local/ remote				■	■	■	■
	Circuit Breaker Maintenance and Trip Circuit Supervision			■	■		■	■
	Cold load pick up			■	■		■	■
	Selective relay scheme logic			■	■		■	■
	Inrush blocking			■	■			■
	Switch on to fault (SOTF)				■		■	■
	Phase rotation			■	■			■
	CT/VT supervision (CTS/VTS)							■

Functional overview (Description of ANSI code nos., see Protection Function Overview)



General features		P120	P121	P122	P123	P125	P126	P127
Number of digital inputs		2	2	3	5	4	7	7/12*
Total number of outputs relays		4	4	6	8	6	8	8
Events recording		250	0	250	250	250	250	250
Fault recording		25	0	25	25	25	25	25
Disturbance recording		5	0	5	5	5	5	5
Setting group		1	1	2	2	2	2	8
Auxiliary timers		0	2	3	5	4	7	7/12*
Number of RS485 port		1	1	1	1	1	1	1/2*
Ethernet RJ45 interface								2*
Communication	IEC60870-5-103, DNP 3.0 & Modbus RTU (port #1)	■	■	■	■	■	■	■
	Courier (port #1)	■	■	■	■			
	Modbus or IEC60870-5-103 (port #2)							■*
	Modbus TCP/IP or IEC60870-5-103 Eth (port #1, RJ45)							■
Time synchronisation	Via rear communication port (DCS)	■		■	■	■	■	■
	Via digital input (external clock)	■		■	■	■	■	■
	Modulated and demodulated IRIG-B							■
Settings software	MiCOM S1 Studio using RS232 front port		■	■	■	■	■	■
Logic equation	AND, OR and NOT gates (8 equations)			■			■	■
Measurements	RMS currents values & frequency	■	■	■	■	■	■	■
	Peak and rolling currents values			■	■		■	■
	Max and average measurements values			■	■		■	■
	Phase and/or neutral angle					■	■	■
	Power and Energy							■
Metering	Harmonics values, THD & TDD							■*
	Class 0.5 measurements values (P, Q, S, E)							■*

Key (■ *): optional

APPLICATION

MiCOM P12x/y provides a wide range of protection functions allowing its use in several applications:

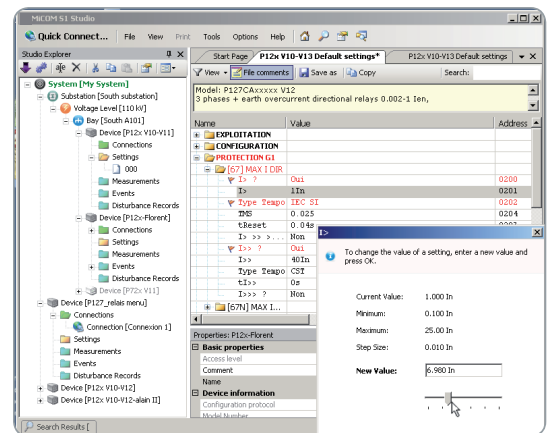
- Main or backup protection on MV&HV systems
- Overhead lines and underground cables as a backup on HV systems
- Neutral systems protection (Insolated, solid earthed, resistance earthed and Petersen coil earthed)
- MV subscribers, Industry, Transport
- Generator and transformer scheme
- High impedance scheme for busbar and machine protection

OVERVIEW

The following functions are available in most of the devices (see Protection Function Overview tables):

- Measurement and metering
- Dynamic average values, max peak value and rolling demand for the current measurements
- Disturbance recording including all the CT/VT inputs and logic status
- Fault recording
- Event recording

Simple Function Selection by Mouseclick with S1 Studio



MiCOM P12x & P12y
provide simple and complete solution for your specific application.

MAIN FUNCTIONS

The P12x/y protection relays are comprised of full suite of protection functions as well as automatic recloser and auxiliaries.

All available functions, including protection, automation, communication, leds, inputs and outputs, are easily programmable through the user-friendly human machine interface and/or the MiCOM S1 Studio software interface.

PROTECTION FUNCTIONS

Three-phase overcurrent (50/51) & earth overcurrent (50N/51N)

Three independent stages are available either for phase and earth fault protection. For the first and second stage the user may independently select definite time delay (DTC) or inverse time delay (IDMT) with different type of curves (IEC, IEEE/ANSI, RI, RECT, EDF BPN). The third stage can be configured for peak detection and with definite time only. Each stage and related time delay can be programmed to provide maximum selectivity. The IDMT stages have reset definite or IDMT timer to reduce clearance times when intermittent faults occur.

A fourth earth overcurrent threshold based on derived earth current calculation is available on MiCOM P122, P123 and P127 (when no earth CT is available).

The MiCOM P12x/y relays have separate instantaneous and delayed information for each stage. MiCOM P123, P126 & P127 can indicate the phase(s) in fault by configuring output relays (first stage only)

Three-phase & earth-fault directional overcurrent (67/67N)

Each of the three-phase overcurrent stages of P127 & earth fault stages of P125/6/7 can be independently configured as directional protection and with specific characteristic angle (RCA) and boundaries. The phase fault directional elements are internally polarised by quadrature phase to phase voltages. A synchronous polarising function is provided to ensure a correct operation of the overcurrent elements for close-up three phase faults where the collapse of the polarising line voltages occurs. In addition to the residual current, the residual voltage must be connected to a dedicated input or internally calculated as vector sum (P127 only) in order to make possible the directional operation of the earth-fault. Each earth-fault directional stage measures the residual current, the residual voltage, and the angle between residual voltage and current.

Thermal overload (49)

Transformers and cables must be protected taking into account of their particular thermal characteristics. MiCOM P122/3 & P126/7 relays include a thermal replica element based on the true RMS value of the current, up to 10th harmonic. Alarm and overload thresholds and time constant are fully programmable to match each application requirement.

High impedance restricted earth-fault (64N)

MiCOM P12x range offer the REF feature applied to enhanced ground fault detection on each transformer winding.

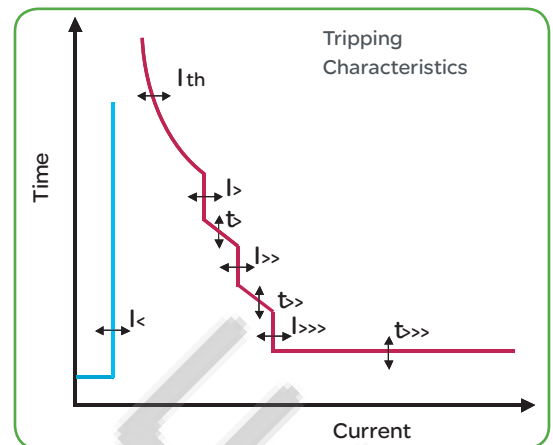
The relays ensure a high degree of stability against external fault conditions and a reliable performance against internal faults.

All the 50N/51N stages can be used for this application.

Negative sequence overcurrent (46)

The MiCOM P122/3 & P126/7 relays include a programmable function specially designed to detect unbalanced load or fault conditions.

The three stages of negative sequence overcurrent have the same setting ranges and time delay as the phase overcurrent.



Broken conductor (46BC)

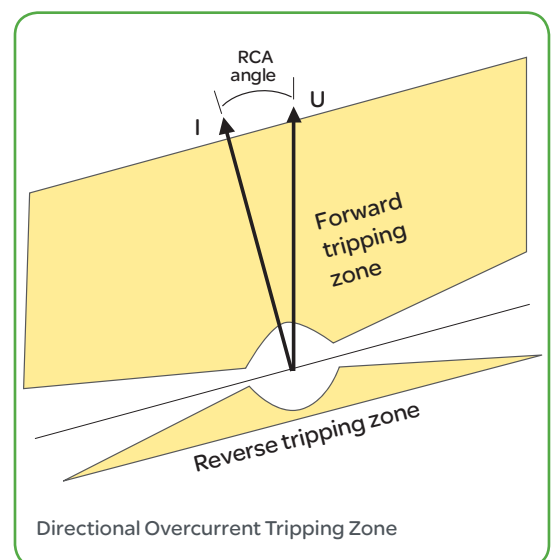
A typical unbalanced fault that can occur on the system is an open circuit fault. This fault can arise from broken conductor, discrepancy of one switchgear poles position or blowing of a fuse.

MiCOM P122/3 and P126/7 relays are able to measure the ratio of negative to positive sequence current (I_2/I_1). This fully programmable function allows more sensitivity and stability than pure negative sequence measurement.

Directional power protection (32)

MiCOM P127 relays provides a full set of directional power protection including two independent thresholds for each of the following function :

- 3-phases under active power ($P<$, $P<<$)
- 3-phases over active power ($P>$, $P>>$)
- 3-phases under reactive power ($Q<$, $Q<<$)
- 3-phases over reactive power ($Q>$, $Q>>$)



Undercurrent protection (37)

MiCOM P122/3 & P126/7 relays provide a definite time undercurrent protection. This function allows typical applications such as loss of load or simple broken conductor detection.

High impedance three-phase differential protection (87)

The phase inputs of MiCOM P12x relays can be applied in the typical high-impedance scheme for busbar or machine protection.

The relays ensure a high degree of stability against external fault conditions and a reliable performance against internal faults.

All the 50/51 stages can be used for this application, the third stage configured in peak mode is recommended for the best performance.

Under / over voltage (27/59)

The P127 relay provides two independent under-voltage stages and two over-voltage stages. They are definite time elements. Each stage can be configured to operate from either phase-neutral or phase-phase voltages in single-phase mode (OR mode) or three-phase mode (AND mode).

Under / over frequency (81U/O)

Time delayed under and over frequency protection available on P127 provides the fundamental form of frequency protection. When the frequency measured is crossing one of the 6 pre-defined thresholds, the relays generates a start signal and after a user settable time delay, a trip signal.

Rate of frequency (81R)

Time delayed rate of frequency protection in MiCOM P127 is used for severe disturbances when shedding load in small steps may not be sufficient. It can also compliment the generator control system to reduce or shed generation when the frequency rises above the nominal frequency at a high rate.

Residual overvoltage (59n)

P125/6/7 Provides an additional residual over-voltage stage that can be used for generic earth faults detection, particularly in insulated neutral system or as backup at busbar level.

Circuit breaker failure protection (50BF)

The circuit breaker failure verifies the effective opening of the CB by a dedicated undercurrent threshold. The circuit breaker failure function can be activated by trip of a generic protection or/and external command by the relevant digital input. The circuit breaker failure protection can be used for tripping upstream circuit breakers too.

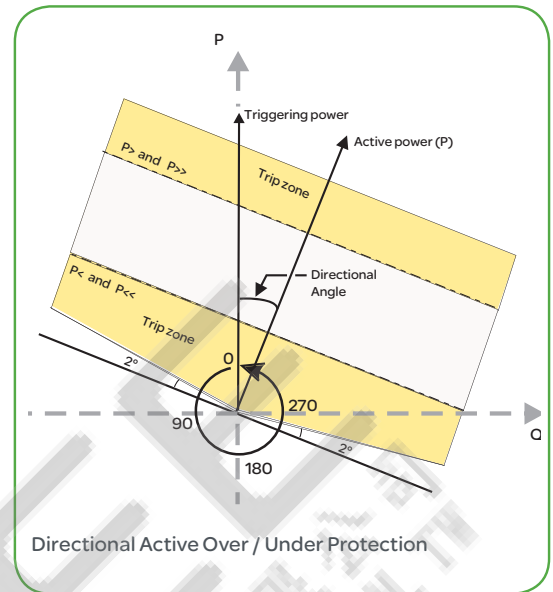
Voltage controlled overcurrent (51V)

The 51V function in P127 is a combination of I \gg and U \lt functions to inhibit trip when normal generator current is already bigger than I \gg threshold:

- Overcurrent function trip will be inhibited if current is bigger than I \gg AND voltage greater than U \lt (Generator ON => Live busbar).
- Overcurrent function will trip if current is bigger than I \gg AND voltage smaller than U \lt (Generator OFF => dead MV busbar).

Voltage transformer supervision (VTS)

P127 offer the possibility to monitor Voltage Transformer presence and could affect directional overcurrent. When VTS is detected, overcurrent function can be blocked or changed to a non directional overcurrent. Moreover, as soon as VTS is detected, all protection functions which needs voltage measure will be blocked (27 & 32N, for instance).



Current transformer supervision (CTS)

Current transformer supervision is provided in MiCOM P127 to detect loss of phase CT based on zero sequence current occurrence combined with zero sequence voltage disappearance.

Switch on to fault protection

Closing of a circuit breaker might inadvertently lead to a short-circuit fault due to a maintenance ground clamp not yet removed. The P12x/y relays incorporate configurable switch on to fault protection. It provides an instantaneous trip during a settable time after local or remote manual close, or after an automatic reclosing, or when triggered by a digital Input (downstream protection or 52A).

Selective relay scheme logic

The P122/3 and P126/7 relays include selective relay scheme logic. A dedicated digital input can temporarily alter the time delay settings in response to the phase/earth fault start condition of a downstream relay. This function allows the MiCOM relays to quickly clear the fault when used in a cascade scheme



MiCOM P12x/y:
the easy, safe and fast
way to detect the fault
in your power system

Cold load pick-up

Cold load pick-up temporarily raises the setting of selectable stages closer to the load profile, avoiding unwanted trips.

Setting value can be increased by 800% during a settable duration. To trigger this function, either CB close position can be used or an automatic detection based on a sudden raise of current value.

Autorecloser (79)

MiCOM P123 and P126/7 relays include a 4-shot triphase autorecloser. All the programmed protection functions may independently start any of the shots and the user can program which functions are allowed to trip after any of the shots. This makes possible special reclosing cycles e.g. as requested for coordination with fuses in distribution with tapped transformers.

To prevent excessive number of reclosing cycle in a short period of time, a setting can be used to define the maximum number of reclosing cycle allowed in a period of time after first one was detected. Dead and reclaim times are freely adjustable. A counter stores the number of reclose commands. This information is free locally or remotely. To inform operator that autorecloser has been blocked internally or externally, output relays can be assigned to these signals.

Outputs contacts

Any outputs, including trip, can be latched. Reset of the latched outputs is possible by digital input, operator action on the Human Machine Interface or by remote communication (Digital Control System).

The two first output contacts (RL1 & RL2) can be used as failsafe relays to provide a "fail safe alarm" in case of power supply loss or major hardware failure. Other available relays can be inverted to reverse NO relays operating condition (output relays closing when logical state of the signal changes from 1 to 0).

Communication & synchronization

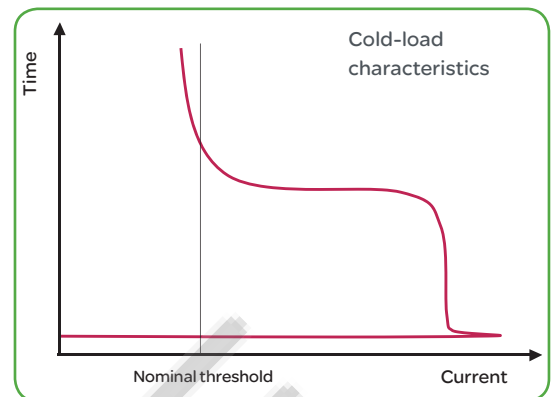
The MiCOM P12x/y offers a wide range of communication protocols, allowing its utilization in most of the network control and data acquisition systems (via Modbus, IEC 60870-5-103, DNP3.0 & Courier/K-Bus). It has been designed for permanent multidrop connection through the rear RS485 communication port. A second RS485 is optionally available on MiCOM P127 for maintenance purpose with Modbus or IEC 60870-5-103.

With latest upgrade, MiCOM P127 now provides the optional Ethernet communication. The new Ethernet communication option offers:

- 2* RJ45 interfaces (replace the standard RS485 port)
- 10Base-T/100Base-TX communication
- Single or Dual Stand-by mode set by HMI operation
- Modbus TCP/IP or IEC60870-5-103 Ethernet - as per ordering option

The MiCOM P12x/y incorporates an internal clock to allow a 1ms accuracy time tagging of alarms, events, fault and disturbance record. To avoid any drifting of the time tagging clock, it's necessary to periodically synchronize the relays. To do this P12x/y offers two solutions:

- Synchronization from the substation control system via the rear communication port
- Synchronization from an external GPS clock via a dedicated digital input
- Synchronization from an external GPS clock via a modulated or demodulated IRIG-B signal (P127 only)



OPERATION & MAINTENANCE

Setting groups

External conditions may request the need for different settings. MiCOM P122/3 and P125/6/7 provide two independent setting groups. In MiCOM P127, up to 8 settings groups are available to have a flexible management of customer application schemes.

Target settings change (1 to 8) should be performed by DCS or HMI since digital input status change can only switch from one group to another. Duplication facilities have been implemented to ease engineering work.

Circuit breaker command

To allow an easy and secured command of the circuit breaker through the HMI, a dedicated menu has been created in MiCOM P122 / P123 / P125 / P126 / P127. It's now possible to send a local open/close command through the HMI after operator confirmation.

Optional Ethernet communication port

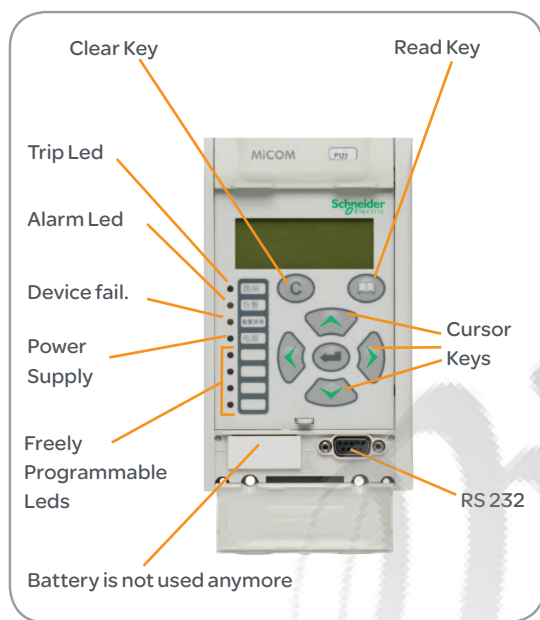


Proven protection
as safe, simple and
versatile as your
application needs

Multi-language user interface (HMI)

All functions, including protection, automation, communication, LEDs, inputs and outputs, can be programmed and modified using the front panel user interface (Human Machine Interface).

The backlit LCD informs the user about settings, measurements & faults thanks to the pull-down structure menu allowing easy and quick access to any data. Moreover, the following languages can be settable in most of the relays: French, English, Spanish, Portuguese, Turkish, Polish, Russian, Chinese, Dutch, German, Italian, Czech, Hungarian and Greek.

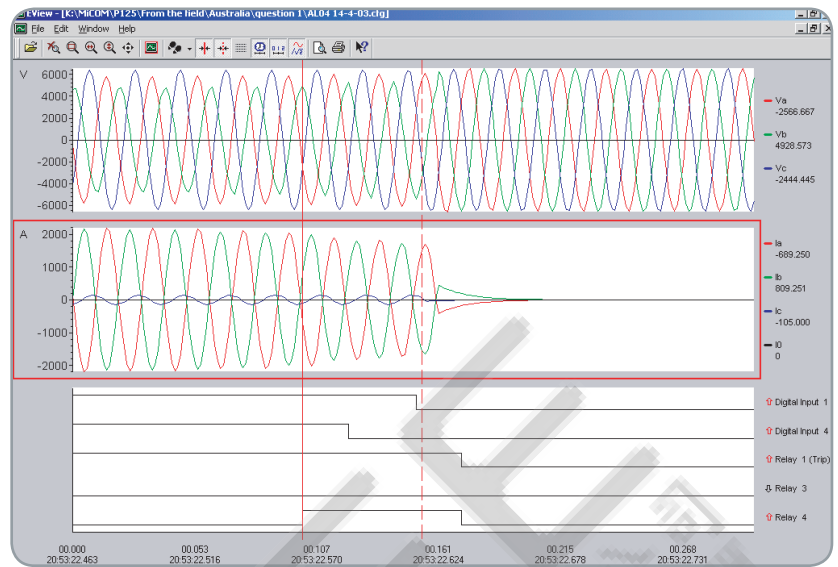


Circuit breaker monitoring and supervision

Circuit-breaker preventive maintenance is an advanced function provided by the MiCOM P122/3 and P126/7 relays with adjustable closing and opening time measurements. All fault phase currents I₁ or I₂ are cumulated to inform about total interrupted current. These relays allow trip circuit supervision by using a specific input.

Event recording

250 events are stored in MiCOM P12x/y relays (even after a power supply loss) Events include inputs/outputs, change of status, alarms and contact operations. To upload them, it is possible to use the RS232 front port (MiCOM S1 Studio) or the rear serial port (DCS). Event records are stored on a non volatile flash memory.



Example of disturbance record

Fault recording

The last 25 faults are stored inside the MiCOM P12x/y relays.

Each fault includes: Record number/ Fault time / Active setting group / Faulted phase / Protection operation / Magnitude of input quantities. Fault indicator helps the user to clearly identify the fault and to monitor relay setting and operations as all information are available on the relay HMI.

Fault records are stored on a non volatile flash memory.

Disturbance recording

Up to 5 disturbance files are stored in the relays. Even if the total duration is fixed to 15s, it can be fully adjustable for easy adaptation to customer requirements (1s / 3s / 5s / 7s / 9s).

There are stored in COMTRADE format.

The disturbance recording function is triggered either by any of the programmed thresholds or by an external input, or through the communications. All digital and analogical information are stored in a flash memory and can be transferred using the front communication port or the rear port to be used by an external data analyser. Disturbance records are stored on a non volatile flash memory.

MiCOM S1 Studio support software

A Support Software MiCOM S1 Studio is available for the entire MiCOM family, including P12x/y relays.

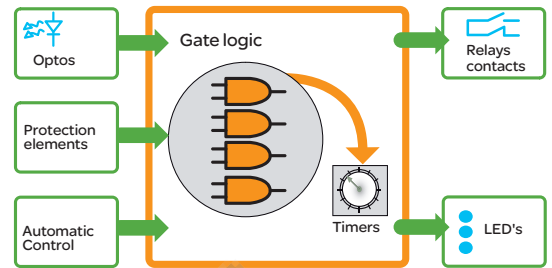
MiCOM S1 Studio is fully Windows™ compatible. This support Software allows easy setting of any MiCOM P12x/y model, preparing, storing, and retrieving setting files for further download on relay. In addition S1 Studio makes possible reading measurements and downloading event, fault and disturbance records for post-fault analysis purpose.

Logic equations

The MiCOM P121/2/3 & P126/7 relays integrate complete logic equations to allow customization of the product based on customer application.

Up to 8 independent Boolean equations can be used. Each equation offers the possibility to use AND, OR & NOT logical gates. Up to 16 parameters can be used for each equation including any threshold and opto-input status. Every result of equation can be time delayed, reused in another equation (P126/P127) and assigned to any output relays, trip, trip latching and/or HMI LEDs.

Each boolean equation result can be alarmed or not.



Hardware and case


MiCOM P12x/y are based on advanced numerical technology. All the models of the MiCOM P12x/y series have a 4U draw out metal case, and can be flush-mounted in switchboard or panel or rack-mounted.

All the CT inputs are automatically short-circuited as soon as the active unit is withdrawn in its case.

To insure a compliance with any auxiliary voltage source and minimize variants, a universal power supply board from 24 to 250Vac/dc is available along the MiCOM P12x/y range.

Wiring

External connections are made via MIDOS type terminal blocks. Each connection includes two 4.8 mm Faston and one M4 screw fixing. The wiring for all the MiCOM P12x/y are standard to provide maximum compatibility.



DEVICE TRACK RECORD

- **OPN/MODN:** First Numerical overcurrent relay launched in 1988. More than 9.800 devices installed.
- **PS4xx:** First Numerical overcurrent relay launched in 1990. More than 25.000 devices installed.
- **MX3AMxxx:** First Numerical overcurrent relay launched in 1995. More than 14.000 devices installed.
- **MiCOM P12x and P12y range:** First MiCOM P20 Numerical overcurrent relay launched in 1998. More than 250.000 devices installed.

Schneider Electric Industries SAS

35, rue Joseph Monier
 CS 30323
 F - 92506 Rueil Malmaison Cedex (France)
 Tel.: +33 (0) 1 41 29 70 00
 RCS Nanterre 954 503 439
 Capital social 896 313 776 €
 www.schneider-electric.com

As standards, specifications and designs change from time to time, please ask for confirmation of the information given in this publication.

Design: Schneider Electric Industries SAS - Sonovision
 Photos: Schneider Electric Industries SAS
 Printed: Altavia Connexion - Made in France

