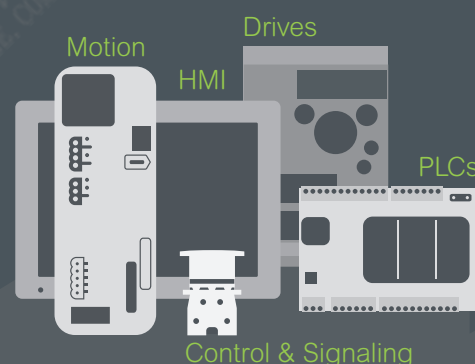




Introducing the **Easy Series**

Essential automation & control products

When just enough is just right!



Easy Harmony XA2

Plastic pushbuttons, switches and pilot lights

Control and signaling units Ø 22



Harmony

Discover [Harmony](#)

Advanced operator interface and industrial relays

Harmony operator interface and industrial relays enhance operational efficiency and equipment availability across industrial and building applications. **Harmony** includes intelligent connected products and edge terminals that visualize, gather and process data, enabling informed operator decisions

Explore our offer

- [Harmony](#) Push Buttons and Switches
- [Harmony](#) HMI Operator Terminals, IPC and EdgeBox
- [Harmony](#) Signaling Devices
- [Harmony](#) Electrical Relays
- [Harmony](#) Safety

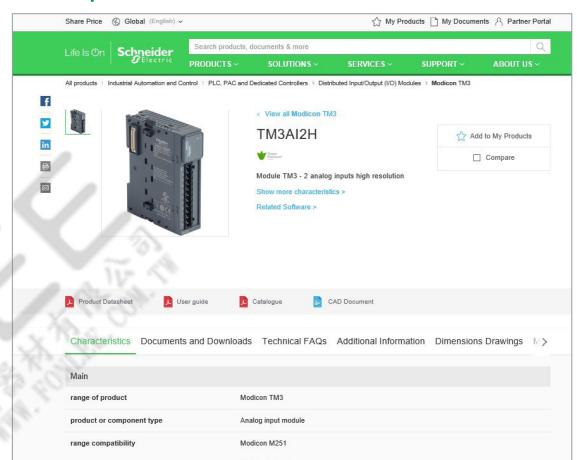
Quick access to product information

Get technical information about your product

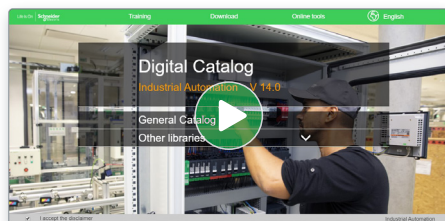
 TMD481	 TMD482	 TMD483	 TMD484	 TMD485	 TMD486	 TMD487	 TMD488	 TMD489	 TMD490	 TMD491	 TMD492	 TMD493	 TMD494	 TMD495	 TMD496	 TMD497	 TMD498	 TMD499	 TMD500	 TMD501	 TMD502	 TMD503	 TMD504	 TMD505	 TMD506	 TMD507	 TMD508	 TMD509	 TMD510	 TMD511	 TMD512	 TMD513	 TMD514	 TMD515	 TMD516	 TMD517	 TMD518	 TMD519	 TMD520	 TMD521	 TMD522	 TMD523	 TMD524	 TMD525	 TMD526	 TMD527	 TMD528	 TMD529	 TMD530	 TMD531	 TMD532	 TMD533	 TMD534	 TMD535	 TMD536	 TMD537	 TMD538	 TMD539	 TMD540	 TMD541	 TMD542	 TMD543	 TMD544	 TMD545	 TMD546	 TMD547	 TMD548	 TMD549
---	---	---	---	---	---	---	---	---	---	---	---	---	---	---	---	---	---	---	--	---	---	---	---	---	---	---	---	---	---	---	---	---	---	---	---	---	---	---	---	---	---	---	---	---	---	---	---	---	---	---	---	---	---	---	---	---	---	---	---	---	---	---	---	---	---	---	---	---

Each commercial reference presented in a catalog contains a hyperlink. Click on it to obtain the technical information of the product:

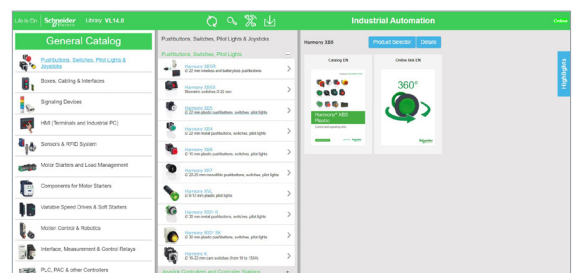
- Characteristics, Dimensions and drawings, Mounting and clearance, Connections and schemas, Performance curves
- Product image, Instruction sheet, User guide, Product certifications, End of life manual



Find your catalog



- > With just 3 clicks, you can access the Industrial Automation and Control catalogs, in both English and French
- > Consult digital automation catalogs at [Digi-Cat Online](#)

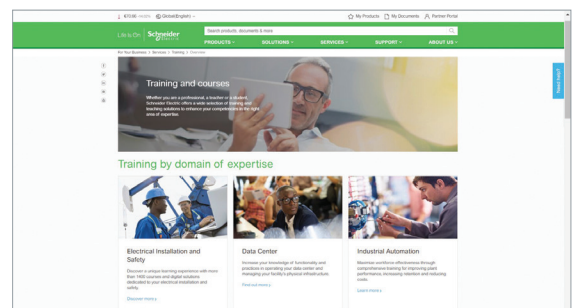


- Up-to-date catalogs
- Embedded product selectors, 360° pictures
- Optimized search by commercial references

Select your training



- > Find the right [Training](#) for your needs on our Global website
- > Locate the training center with the selector tool, using this [link](#)



General contents

Easy Harmony XA2

■ General presentation.....	page 2
-----------------------------	--------

Selection guide	page 4
------------------------------	--------

■ General

□ Presentation	page 8
----------------------	--------

□ Description	page 9
---------------------	--------

■ References

□ Spring return pushbuttons	page 12
-----------------------------------	---------

□ Mushroom head pushbuttons, spring return	page 12
--	---------

□ Pushbuttons, push-push.....	page 12
-------------------------------	---------

□ Double-headed pushbuttons, spring return.....	page 13
---	---------

□ Emergency switching off pushbuttons, push-pull and turn to release.....	page 13
--	---------

□ Selector switches, with standard handle or with long handle.....	page 14
--	---------

□ Key switches.....	page 14
---------------------	---------

□ Illuminated pushbuttons, flush push with integral LED	page 15
---	---------

□ Bulbs and associated accessories for illuminated pushbuttons	page 16
--	---------

□ Contact functions for all XA2 pushbuttons and switches	page 16
--	---------

□ Pilot lights	page 17
----------------------	---------

□ Indicators	page 18
--------------------	---------

□ Empty control stations	page 19
--------------------------------	---------

□ Product reference index	page 20
--	---------

Easy Harmony XA2:

- modular, plastic pushbuttons and switches with metallic-look ring,
- complete, plastic pilot lights with integral LED

Fit for purpose

All the products composing the Easy Harmony XA2 range have been designed to be used in numerous control and signaling applications:

- > customers can easily select the key functions for standard applications
- > their diameter, Ø 22 mm / 0.866 in. makes them suitable for standard OEM and panel builder applications.
- > with plastic material, they provide a solution for industrial applications demanding a high resistance to chemical agents.

Ease and comfort of choice

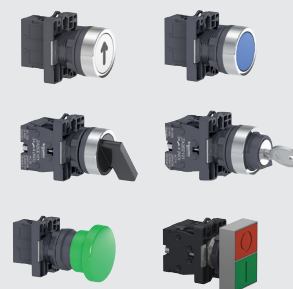
The range is available in the form of complete units. It involves:

- > modular, plastic pushbuttons and switches with metallic-look ring
The modular design allows flexible and simple setup for complete products: the right product can be chosen among various types of heads and 2 types of functions are proposed (contact and signaling)
- > complete pilot lights, provided with integral LED.

All products are fitted with screw clamp terminals allowing fast and easy connection.

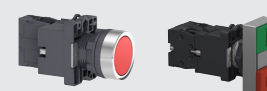
Contact functions

- Pushbuttons with spring return and push-push (marked or unmarked)
- Selector switches and key switches, 2 or 3 positions
- Emergency switching off pushbuttons with push-pull and turn to release
- Double-headed pushbuttons with spring return



Contact and signaling functions

- Illuminated pushbuttons with integral LED, spring return and flush push
- Illuminated double-headed pushbuttons with integral LED, spring return



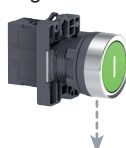
Signaling functions

- Pilot lights with integral LED
- Indicators with integral LED

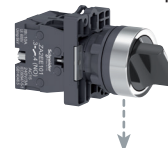


Groomed ergonomics

- > Metallic-look ring on pushbuttons and switches gives a modern look
- > Ergonomic curve on the selector switches allows flexible operation



Metallic-look ring



Ergonomic curve

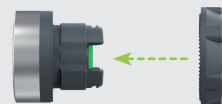


Pushbuttons and switches with metallic-look ring design

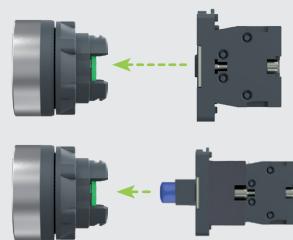
Easy installation

- > Installation of pushbuttons is simple and easy
- > Mounting by single nut to the control panel
- > Anti-rotation plate prevents the pushbutton head from rotation

- Single lock ring for mounting on control panel



- Clip-together component system for head, body, contacts, and LED light blocks



Proven robustness

- > Conforming to most demanding international standards and approvals
- > Tested and certified performance
- > Excellent resistance to mechanical shock and vibration
- > Supports extended temperature range from – 40° C to + 70° C




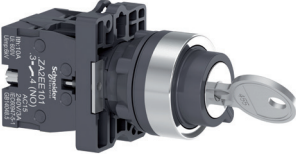
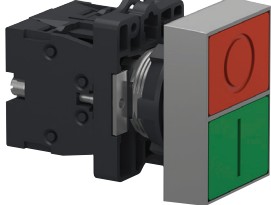
Helps customer to
improve the reliability

Service and availability

- > Supported by the service of Schneider Electric
- > Wide availability throughout an extensive distribution network

Control and signaling units Ø 22
Easy Harmony XA2, plastic
Pushbuttons, switches and pilot lights

Type of products		Contact functions
		PushbuttonsEmergency switching off pushbuttons
		  
Description of range		<div>■ Pushbuttons, spring return: flush push, mushroom head, and push-push</div> <div>■ Emergency switching off pushbuttons: turn to release and push-pull</div>
Features	Products	Complete units
	Shape of head	Circular
Drilling or cut-out for mounting		Ø 22 mm/0.866 in.
Degree of protection		IP 65 conforming to standard IEC 60529
International standards		IEC 60947-5-1, EN 60947-5-1, GB/T 14048.1-93, GB/14048.5-93
Product certification		CCC, EAC, CE
Cabling		Screw clamp terminal connections
Mounting	Panel thickness	Ø 1 to 6 mm/ 0.04 to 0.24 in.
	Type references	<div>XA2EA●●/EA●●●●/EC●●/EH0●●</div> <div>XA2ET●●/ES●●●</div>
Pages		<div>12</div> <div>13</div>

Contact functions	
Selector and key switches	Double-headed pushbuttons
 	
<div>■ Selector switches, 2 or 3-position: standard or long handle</div> <div>■ Key switches</div>	■ Double-headed pushbuttons, spring return
Complete units	
Circular	Rectangular
Ø 22 mm/0.866 in.	
IP 54 conforming to standard IEC 60529 Selector switches: IP 65 Key switches: IP 54	IP 40 conforming to standard IEC 60529
IEC 60947-5-1, EN 60947-5-1, GB/T 14048.1-93, GB/14048.5-93	
CCC, EAC, CE	CCC, CE, and EAC
Screw clamp terminal connections	
Ø 1 to 6 mm/ 0.04 to 0.24 in.	
XA2ED●●/EJ●●/EG●●	XA2EA7A3415
14	13

Control and signaling units Ø 22
Easy Harmony XA2, plastic
Pushbuttons, switches and pilot lights

Type of products		Contact and signaling functions	
		Illuminated pushbuttons	Illuminated double-headed pushbuttons
			
Description of range		■ Illuminated pushbuttons with integral LED, spring return: flush push	■ Illuminated double-headed pushbuttons with integral LED, spring return
Features	Products	Complete units	
	Shape of head	Circular	Rectangular
Drilling or cut-out for mounting		Ø 22 mm/0.866 in.	
Degree of protection		IP 65 conforming to standard IEC 60529	IP 40 conforming to standard IEC 60529
International standards		IEC 60947-5-1, EN 60947-5-1, GB/T 14048.1-93, GB/14048.5-93	
Product certification		CCC, EAC, C€	CCC, C€, and EAC
Cabling		Screw clamp terminal connections	
Mounting	Panel thickness	Ø 1 to 6 mm/0.04 to 0.24 in.	
Type references		XA2EW3●●●	XA2EW7L3741●5
Pages		15	13

Signaling functions	
Pilot lights	Indicators
	
Description of range	
Features	
Description of range	
Degree of protection	
International standards	
Product certification	
Cabling	
Mounting	
Type references	
Pages	

Presentation

The Easy Harmony XA2 range of Ø 22/0.866 in. plastic control and signaling units combines simplicity of installation, flexibility and robustness. It meets the requirements of the majority of industrial applications. The metallic-look ring design on the pushbuttons and switches gives them a modern look. These products are available in the form of complete units.

■ This range includes:

- Contact functions: pushbuttons, selector/key switches, Emergency switching off pushbuttons, and double-headed pushbuttons designed for parameter settings, adjustments, and start/stop control of machines and installations
- Contact and signaling functions: illuminated pushbuttons and double-headed illuminated pushbuttons designed for control and signaling functions
- Signaling functions: pilot lights and indicators designed for visual signaling

■ The pushbutton, switch control (illuminated and non-illuminated), and pilot light offer is both broad and comprehensive:

- Pushbuttons, spring return with flush push, marked or unmarked, or mushroom head
- Emergency stop pushbuttons Ø 40/1.575 in., Ø 30/1.181 in., and Ø 60/2.362 in. with 2 types of head: push-pull and turn to release
- Pilot lights, indicators, and illuminated pushbuttons with integral LED
- Selector switches with different types of operator: standard handle, long handle, or key
- Choice of heads: circular and double-head
- Connection type: screw clamp connector
- Various accessories

Installation

■ Easy Harmony XA2 products are both simple and quick to install:

- Mounting by a single nut to the control panel,
- Body/fixing collar simply clip on the head.

Environment

The performance features of the Easy Harmony XA2 range meets the following specifications:

■ Degrees of protection conforming to standard IEC 60529:

- IP 65 for pushbuttons, Emergency switching off pushbuttons, illuminated pushbuttons, and pilot lights
- IP 54 for key selector switch and indicators
- IP40 for double-headed pushbuttons

■ International standards:

- IEC 60947-5-1, EN 60947-5-1, GB/T 14048.1-93, GB/14048.5-93

■ Product certification:

- CCC, EAC, CEC

For more technical information, please refer to the Schneider Electric website, Easy Harmony XA2 offer.

Complete units		Contact functions		
Pushbuttons, spring return	Type of push			
	Degree of protection	Flush push, unmarked	Flush push, marked	Mushroom head
	Color	IP65	IP65	IP65
	Reference	White, Black, Green, Yellow, Blue, and Red	Green, Black, White, Red and Blue	Black, Green and Red
	Pages	XA2EA●1/EA42	XA2EA33●1/EA43●2/ XA2EA6511	XA2EC●1/EC42
		12	12	12
Pushbuttons, push-push	Type of push			
	Degree of protection	Flush push, unmarked		
	Color	IP65		
	Reference	Black, Green, Yellow and Red		
	Pages	XA2EH0●1/EH042		
		12		
Double-headed pushbuttons, spring return	Type of push			
	Degree of protection	Flush push		
	Color	IP40		
	Reference	Green and Red		
	Pages	XA2EA7A3415		
		13		
Emergency switching off pushbuttons	Type of push			
	Degree of protection	Turn to release and push-pull (Ø 30 mm/1.181 in., Ø 40 mm/1.575 in., Ø 60 mm/1.362 in.)		
	Color	IP65		
	Reference	Red		
	Pages	XA2ET42/ES●42		
		13		

Complete units (continued)

Contact functions



Selector switches and key switches

Type of push

Standard handle, 2 or 3 positions

Long handle, 2 or 3 positions

Key, 2 or 3 positions

Degree of protection

IP65

IP65

IP54

Reference

XA2ED●●

XA2EJ●●

XA2EG21/EG●3

Page

14

Contact and signaling functions



Illuminated pushbuttons, spring return

Type of push

Flush push

Degree of protection

IP65

LED

Integral LEDs 24, 220...230, or 380...400 V

Color

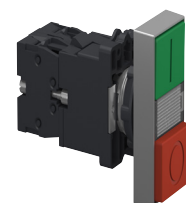
White, Green, Red, Amber and Blue

Reference

XA2EW3●B1/3●M1/ 3●Q1

Pages

15



Double-headed pushbuttons, spring return with pilot light block

Type of push

Flush push

Degree of protection

IP40

LED

Integral LEDs 24 or 220...230 V

Color

Red and Green

Reference

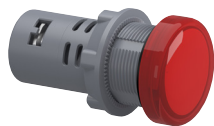
XA2EW7L3741B5, XA2EW7L3741M5

Pages

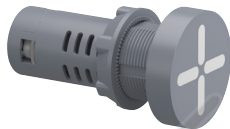
13

Complete units (continued)

Signaling functions



Pilot lights	Degree of protection	IP65
	LED	Integral LEDs 12 V, 24 V, 30 V, 48 V, 60...63.5 V, 110 V, 220...230 V, and 380...400 V
	Color	White, Green, Red, Amber, Blue, Yellow and Bi-color (Green/Red)
	Reference	XA2EV●●LC/EV●E●LC/EV●D●LC/EV●●34LC
	Pages	17



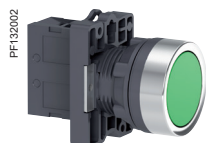
Indicators	Degree of protection	IP54
	LED	Integral LEDs 110 V, 220...230 V, and 380...400 V
	Color	Red and Green
	Reference	XA2EV●34●PC
	Pages	18

Control and signaling units Ø 22

Easy Harmony XA2, plastic

Spring return pushbuttons, marked and unmarked

Mushroom head pushbuttons, spring return



XA2EA31



XA2EA4342

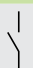
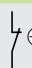



XA2EC31









XA2EH021

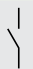
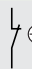
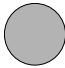
Spring return pushbuttons with flush push

Shape of head	Type of contacts	Color of push	Marking	Reference	Weight kg/lb
	 NO  NC				
Unmarked					
	1 –	White	–	XA2EA11	0.032/0.071
	1 –	Black	–	XA2EA21	0.032/0.071
	1 1	Black	–	XA2EA25	0.032/0.071
	1 –	Green	–	XA2EA31	0.032/0.071
	1 1	Green	–	XA2EA35	0.032/0.071
	1 –	Yellow	–	XA2EA51	0.032/0.071
	1 –	Blue	–	XA2EA61	0.032/0.071
	1 –	Red	–	XA2EA41	0.032/0.071
	– 1	Red	–	XA2EA42	0.032/0.071
	1 1	Red	–	XA2EA45	0.032/0.071

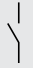
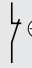

Marked

	1 –	Green	"I"	XA2EA3311	0.032/0.071
	1 –	Black	"↑"	XA2EA3351	0.032/0.071
	1 –	White	"↑"	XA2EA3341	0.032/0.071
	– 1	Red	"O"	XA2EA4322	0.032/0.071
	– 1	Red	"STOP"	XA2EA4342	0.032/0.071
	1 –	Blue	"↕"	XA2EA6511	0.032/0.071

Mushroom head pushbuttons, spring return

Shape of head	Type of contacts	Color of push	Diameter Ø (mm)/in.	Reference	Weight kg/lb
	 NO  NC				
	1 –	Black	40/1.575	XA2EC21	0.052/0.115
	1 –	Green	40/1.575	XA2EC31	0.052/0.115
	– 1	Red	40/1.575	XA2EC42	0.052/0.115

Pushbuttons, push-push with flush push

Shape of head	Type of contacts	Color of push	Reference	Weight kg/lb
	 NO  NC			
Complete unit				
	1 –	Black	XA2EH021	0.04/0.088
	1 –	Green	XA2EH031	0.04/0.088
	– 1	Red	XA2EH042	0.04/0.088
	1 –	Yellow	XA2EH051	0.04/0.088

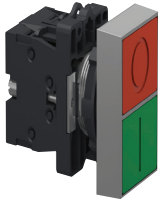
Control and signaling units Ø 22

Easy Harmony XA2, plastic

Double-headed pushbuttons, spring return

Emergency switching off pushbuttons

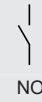
XA2E_CP20011_2



XA2EA7A3415

Double-headed pushbuttons, spring return

Shape of head	Description	Type of contacts	Caps (1)		Reference	Weight kg/lb
			Marking	Background color		



NO

NC

Complete units



1 flush push, green

1

1

"I"

Green

XA2EA7A3415

0.048/0.106

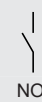
1 flush push, red

"O"

Red

Double-headed pushbuttons with 1 white central pilot light block

Shape of head	Description	Type of contacts	Caps (1)		Pilot light voltage V	Reference	Weight kg/lb
			Marking	Background color			



NO

NC

Complete units



1 flush push, green

1

1

"I"

Green

24 ~

XA2EW7L3741B5

0.072/0.159

1 flush push, red

"O"

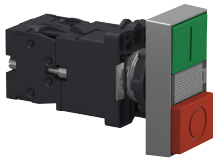
Red

1 central pilot light block, white

220...230 ~ XA2EW7L3741M5 0.072/0.159



XA2E_CP20012_2



XA2EW7L3741●●

Emergency switching off pushbuttons

Shape of head	Type of push	Type of contacts	Diameter Ø (mm)/in.	Reference	Weight kg/lb
---------------	--------------	------------------	---------------------	-----------	--------------



NC

Push-pull

1

40/1.575

XA2ET42

0.088/0.194



Turn to release

1

30/1.181

XA2ES442

0.056/0.123



40/1.575

XA2ES542

0.058/0.128

60/2.362

XA2ES642

0.064/0.141

Note: For information on dimensions, please refer to the Schneider Electric website, Easy Harmony XA2 offer.

(1) These caps are factory assembled and cannot be removed (risk of damage).

PFI32022



XA2ET42

Control and signaling units Ø 22

Easy Harmony XA2, plastic

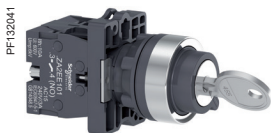
Selector switches, with standard or long handle

Key switches



XA2ED53

Selector switches, with standard handle or with long handle						
Shape of head	Type of push	Type of contacts		Number and type of positions	Reference	Weight kg/lb
		NO	NC			
	Standard handle	1	—	2 - stay put	XA2ED21	0.04/0.088
		1	1	2 - stay put	XA2ED25	0.054/0.119
		2	—	3 - stay put	XA2ED33	0.054/0.119
		2	—	3 - spring return from 2 sides	XA2ED53	0.054/0.119
		1	—	2 - spring return	XA2ED41	0.041/0.090
	Long handle	1	—	2 - stay put	XA2EJ21	0.041/0.090
		1	1	2 - stay put	XA2EJ25	0.041/0.090
		2	—	3 - stay put	XA2EJ33	0.055/0.121
		2	—	3 - spring return from 2 sides	XA2EJ53	0.055/0.121



XA2EG03

Key switches						
Shape of head	Type of push	Type of contacts		Number and type of positions	Reference	Weight kg/lb
		NO	NC			
	Key	1	—	2 - stay put, one side pull-out	XA2EG21	0.064/0.141
		2	—	2 - stay put, two sides pull-out	XA2EG43	0.078/0.172
		2	—	2 - spring return, one side pull-out	XA2EG63	0.078/0.172
		2	—	3 - spring return from 2 sides, middle pull-out	XA2EG73	0.078/0.172
		2	—	3 - stay put, middle pull-out	XA2EG33	0.078/0.172
		2	—	3 - stay put, 3 sides pull-out	XA2EG03	0.078/0.172

Note: For information on dimensions, please refer to the Schneider Electric website, Easy Harmony XA2 offer.

Control and signaling units Ø 22

Easy Harmony XA2, plastic

Illuminated pushbuttons with flush push


Bulbs for illuminated pushbuttons

Contact functions for all XA2 pushbuttons and switches



XA2EW36B1

Illuminated pushbuttons with integral LED

Shape of head	Type of push	Supply voltage V	Type of contacts		Color	Reference	Weight kg/lb
			NO	NC			
	Flush push	24 ~	1	—	White	XA2EW31B1	0.056/0.123
					Green	XA2EW33B1	0.056/0.123
					Red	XA2EW34B1	0.056/0.123
					Amber	XA2EW35B1	0.056/0.123
					Blue	XA2EW36B1	0.056/0.123
		220-230 ~	1	—	Red	XA2EW34B2	0.056/0.123
					White	XA2EW31M1	0.064/0.141
					Green	XA2EW33M1	0.064/0.141
					Red	XA2EW34M1	0.064/0.141
					Amber	XA2EW35M1	0.064/0.141
		380-400 ~	1	—	Blue	XA2EW36M1	0.064/0.141
					Red	XA2EW34M2	0.056/0.123
					White	XA2EW31Q1	0.064/0.141
					Red	XA2EW34Q2	0.056/0.123

Note: For information on dimensions, please refer to the Schneider Electric website, Easy Harmony XA2 offer.

Control and signaling units Ø 22

Easy Harmony XA2, plastic

Illuminated pushbuttons with flush push

Bulbs for illuminated pushbuttons

Contact functions for all XA2 pushbuttons and switches



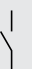
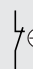
Bulbs with BA 9s base fitting and associated accessories

Description	Characteristics	Color	Sold in lots of	Unit reference	Weight kg/lb
LEDs	24 ~	White	10	DL1LED241	0.002/0.004
		Green	10	DL1LED243	0.002/0.004
		Red	10	DL1LED244	0.002/0.004
		Yellow	10	DL1LED245	0.002/0.004
		Blue	10	DL1LED246	0.002/0.004

Description	Application	Sold in lots of	Unit reference	Weight kg/lb
Bezel tool	Tightening head fixing nut	1	ZB5AZ905	0.016/0.035
Anti-rotation plate	Prevents head from rotation	10	ZB5AZ902	0.008/0.018

Contact functions (for all XA2 pushbuttons and switches)

Screw clamp terminal connections

Description	To be used with	Type of contacts	Sold in lots of	Unit reference	Weight kg/lb
		 NO  NC			
Contact blocks	All XA2 pushbuttons and switches	1 —	1	ZA2EE101	0.014/0.031
		— 1	1	ZA2EE102	0.014/0.031

XA2E_CP20053_2



XA2EVB4LC

XA2E_CP20056_2



XA2EVC6LC

XA2E_CP20054_2



XA2EVE4LC

Pilot lights with integral LED, screw clamp terminal connection

Shape of head	Supply voltage V	Color of lens	Sold in lots of	Reference	Weight kg/lb
	12 ~	White	10	XA2EVJ1LC	0.019/0.041
		Green	10	XA2EVJ3LC	0.019/0.041
		Red	10	XA2EVJ4LC	0.019/0.041
		Amber	10	XA2EVJ5LC	0.019/0.041
		Blue	10	XA2EVJ6LC	0.019/0.041
		Yellow	10	XA2EVJ8LC	0.019/0.041
	24 ~	White	10	XA2EVB1LC	0.019/0.041
		Green	10	XA2EVB3LC	0.019/0.041
		Red	10	XA2EVB4LC	0.019/0.041
		Amber	10	XA2EVB5LC	0.019/0.041
		Blue	10	XA2EVB6LC	0.019/0.041
		Yellow	10	XA2EVB8LC	0.019/0.041
	30 ~	Green/Red	5	XA2EVB34LC	0.022/0.049
		White	10	XA2EVC1LC	0.019/0.041
		Green	10	XA2EVC3LC	0.019/0.041
		Red	10	XA2EVC4LC	0.019/0.041
		Amber	10	XA2EVC5LC	0.019/0.041
		Blue	10	XA2EVC6LC	0.019/0.041
	48 ~	Yellow	10	XA2EVC8LC	0.019/0.041
		White	10	XA2EVE1LC	0.019/0.041
		Green	10	XA2EVE3LC	0.019/0.041
		Red	10	XA2EVE4LC	0.019/0.041
		Amber	10	XA2EVE5LC	0.019/0.041
		Blue	10	XA2EVE6LC	0.019/0.041
	60...63.5 ~	Yellow	10	XA2EVE8LC	0.019/0.041
		White	10	XA2EVEE1LC	0.019/0.041
		Green	10	XA2EVEE3LC	0.019/0.041
		Red	10	XA2EVEE4LC	0.019/0.041
		Amber	10	XA2EVEE5LC	0.019/0.041
		Blue	10	XA2EVEE6LC	0.019/0.041
		Yellow	10	XA2EVEE8LC	0.019/0.041

Note: For information on dimensions, please refer to the Schneider Electric website, Easy Harmony XA2 offer.

Pilot lights with integral LED, screw clamp terminal connection

Shape of head	Supply voltage V	Color of lens	Sold in lots of	Reference	Weight kg/lb
	110 ~	White	10	XA2EVF1LC	0.019/0.041
		Green	10	XA2EVF3LC	0.019/0.041
		Red	10	XA2EVF4LC	0.019/0.041
		Amber	10	XA2EVF5LC	0.019/0.041
		Blue	10	XA2EVF6LC	0.019/0.041
		Yellow	10	XA2EVF8LC	0.019/0.041
	220 ---	White	10	XA2EVM1LC	0.019/0.041
		Green	10	XA2EVM3LC	0.019/0.041
		Red	10	XA2EVM4LC	0.019/0.041
		Amber	10	XA2EVM5LC	0.019/0.041
		Blue	10	XA2EVM6LC	0.019/0.041
		Yellow	10	XA2EVM8LC	0.019/0.041
	220-230 ~	White	10	XA2EVM1LC	0.019/0.041
		Green	10	XA2EVM3LC	0.019/0.041
		Red	10	XA2EVM4LC	0.019/0.041
		Amber	10	XA2EVM5LC	0.019/0.041
		Blue	10	XA2EVM6LC	0.019/0.041
		Yellow	10	XA2EVM8LC	0.019/0.041
	380...400 ~	White	10	XA2EVQ1LC	0.019/0.041
		Green	10	XA2EVQ3LC	0.019/0.041
		Red	10	XA2EVQ4LC	0.019/0.041
		Amber	10	XA2EVQ5LC	0.019/0.041
		Blue	10	XA2EVQ6LC	0.019/0.041
		Yellow	10	XA2EVQ8LC	0.019/0.041
	5	Green/Red	5	XA2EVM34LC	0.022/0.049



XA2EVM5LC



XA2EVQ8LC



XA2EVF34SPC





XA2EVF34BPC



XA2EVF34GPC

Indicators, screw clamp terminal connection

Shape of head	Indicator type	Supply voltage V	Color of lens	Sold in lots of	Reference	Weight kg/lb
	Isolation switch	110 ~	Green/Red	5	XA2EVF34SPC	0.027/0.058
		220...230 ~	Green/Red	5	XA2EVM34SPC	0.027/0.058
		380...400 ~	Green/Red	5	XA2EVQ34SPC	0.027/0.058
	Circuit breaker	110 ~	Green/Red	5	XA2EVF34BPC	0.027/0.058
		220...230 ~	Green/Red	5	XA2EVM34BPC	0.027/0.058
		380...400 ~	Green/Red	5	XA2EVQ34BPC	0.027/0.058
	Ground	110 ~	Green/Red	5	XA2EVF34GPC	0.027/0.058
		220...230 ~	Green/Red	5	XA2EVM34GPC	0.027/0.058
		380...400 ~	Green/Red	5	XA2EVQ34GPC	0.027/0.058

Note: For information on dimensions, please refer to the Schneider Electric website, Easy Harmony XA2 offer.

Control and signaling units Ø 22

Easy Harmony XA2, plastic

Empty control stations for XA2 pushbuttons, switches, and pilot lights



XALB01C



XALB03C

Empty control stations

Description	Characteristics	Dimension w x h x d mm/in.	Number of cut-outs	Reference	Weight kg/lb
Light gray "RAL 7035" cover Dark gray "RAL 7016" base	IP65	68 x 86 x 51/ 2.68 x 3.39 x 2	1	XALB01C	0.100/0.220
		68 x 104 x 51/ 2.68 x 4.1 x 2	2	XALB02C	0.150/0.330
		68 x 86 x 51/ 2.68 x 3.39 x 2	3	XALB03C	0.200/0.440
Yellow "RAL 1021" cover Dark gray "RAL 7016" base	IP65	68 x 86 x 51/ 2.68 x 3.39 x 2	1	XALB01YC	0.100/0.220

D					
DL1LED241	16	XA2EVC6LC	17	XA2EW34Q2	15
DL1LED243	16	XA2EVC8LC	17	XA2EW35B1	15
DL1LED244	16	XA2EVE1LC	17	XA2EW35M1	15
DL1LED245	16	XA2EVE3LC	17	XA2EW36B1	15
DL1LED246	16	XA2EVE4LC	17	XA2EW36M1	15
		XA2EVE5LC	17	XA2EW7L3741B5	13
X		XA2EVE6LC	17	XA2EW7L3741M5	13
XA2EA11	12	XA2EVE8LC	17	XALB01C	19
XA2EA21	12	XA2EVEE1LC	17	XALB01YC	19
XA2EA25	12	XA2EVEE3LC	17	XALB02C	19
XA2EA31	12	XA2EVEE4LC	17	XALB03C	19
XA2EA3311	12	XA2EVEE5LC	17	Z	
XA2EA3341	12	XA2EVEE6LC	17	ZA2EE101	16
XA2EA3351	12	XA2EVEE8LC	17	ZA2EE102	16
XA2EA35	12	XA2EVF1LC	18	ZB5AZ902	16
XA2EA41	12	XA2EVF34BPC	18	ZB5AZ905	16
XA2EA42	12	XA2EVF34GPC	18		
XA2EA4322	12	XA2EVF34SPC	18		
XA2EA4342	12	XA2EVF3LC	18		
XA2EA45	12	XA2EVF4LC	18		
XA2EA51	12	XA2EVF5LC	18		
XA2EA61	12	XA2EVF6LC	18		
XA2EA6511	12	XA2EVF8LC	18		
XA2EA7A3415	"9	XA2EVJ1LC	17		
XA2EC21	12	XA2EVJ3LC	17		
XA2EC31	12	XA2EVJ4LC	17		
XA2EC42	12	XA2EVJ5LC	17		
XA2ED21	14	XA2EVJ6LC	17		
XA2ED25	14	XA2EVJ8LC	17		
XA2ED33	14	XA2EVM1LC	18		
XA2ED41	14	XA2EVM34BPC	18		
XA2ED53	14	XA2EVM34GPC	18		
XA2EDpp	10	XA2EVM34LC	18		
XA2EG03	14	XA2EVM34SPC	18		
XA2EG21	14	XA2EVM3LC	18		
XA2EG33	14	XA2EVM4LC	18		
XA2EG43	14	XA2EVM5LC	18		
XA2EG63	14	XA2EVM6LC	18		
XA2EG73	14	XA2EVM8LC	18		
XA2EH021	12	XA2EVMD1LC	18		
XA2EH031	12	XA2EVMD3LC	18		
XA2EH042	12	XA2EVMD4LC	18		
XA2EH051	12	XA2EVMD5LC	18		
XA2EJ21	14	XA2EVMD6LC	18		
XA2EJ25	14	XA2EVMD8LC	18		
XA2EJ33	14	XA2EVQ1LC	18		
XA2EJ53	14	XA2EVQ34BPC	18		
XA2EJpp	10	XA2EVQ34GPC	18		
XA2ES442	13	XA2EVQ34SPC	18		
XA2ES542	13	XA2EVQ3LC	18		
XA2ES642	13	XA2EVQ4LC	18		
XA2ET42	13	XA2EVQ5LC	18		
XA2EVB1LC	17	XA2EVQ6LC	18		
XA2EVB34LC	17	XA2EVQ8LC	18		
XA2EVB3LC	17	XA2EW31B1	15		
XA2EVB4LC	17	XA2EW31M1	15		
XA2EVB5LC	17	XA2EW31Q1	15		
XA2EVB6LC	17	XA2EW33B1	15		
XA2EVB8LC	17	XA2EW33M1	15		
XA2EVC1LC	17	XA2EW34B1	15		
XA2EVC3LC	17	XA2EW34B2	15		
XA2EVC4LC	17	XA2EW34M1	15		
XA2EVC5LC	17	XA2EW34M2	15		

Life Is On



Learn more about our products at
www.se.com

The information provided in this documentation contains general descriptions and/or technical characteristics of the performance of the products contained herein. This documentation is not intended as a substitute for and is not to be used for determining suitability or reliability of these products for specific user applications. It is the duty of any such user or integrator to perform the appropriate and complete risk analysis, evaluation and testing of the products with respect to the relevant specific application or use thereof. Neither Schneider Electric nor any of its affiliates or subsidiaries shall be responsible or liable for misuse of the information contained herein.

Design: Schneider Electric
Photos: Schneider Electric

Schneider Electric Industries SAS

Head Office
35, rue Joseph Monier - CS 30323
F-92500 Rueil-Malmaison Cedex
France

DIA5ED2140104EN
June 2022 - V8.0